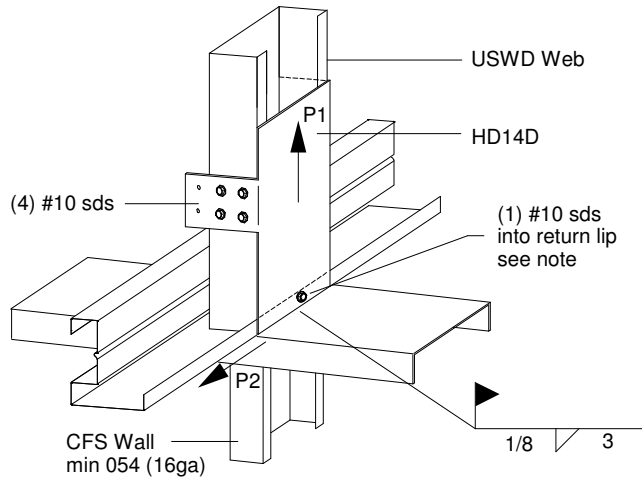
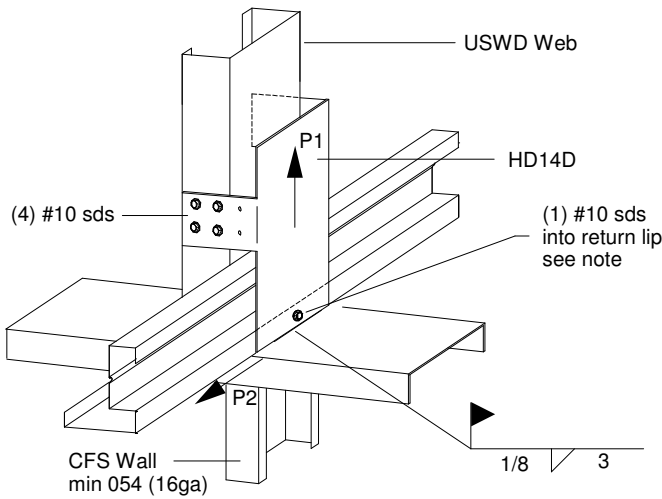
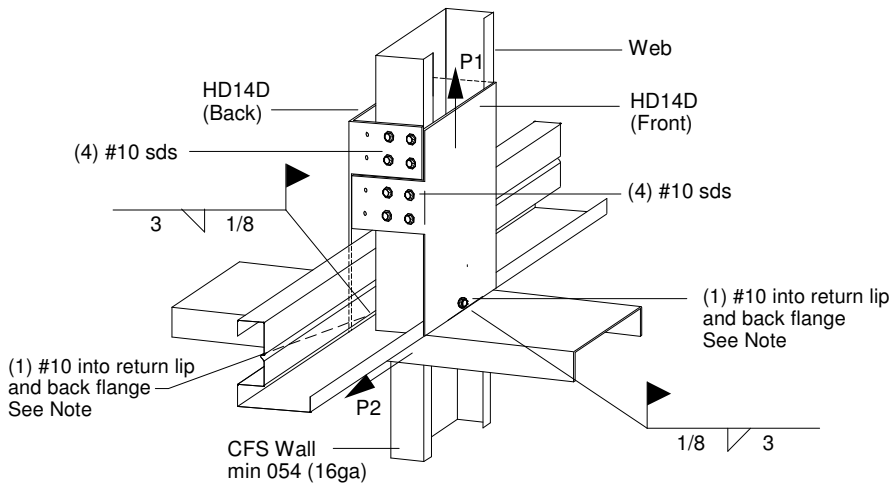


Horizontal Reaction, P2 = 155 lbs
 Horizontal Reaction increased to 395 lbs
 w/ (1) #10 sds installed into return lip



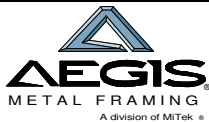
| MAXIMUM CAPACITY (LBS) | | |
|------------------------|-----|-----------|
| | WEB | UPLIFT P1 |
| 1224HD14D | 035 | 1940 |
| | 046 | 3360 |
| | 057 | 3490 |
| 1226HD14D | 035 | 1940 |
| | 046 | 3350 |
| | 057 | 3820 |



| MAXIMUM CAPACITY (LBS) | | |
|------------------------|-----|-----------|
| | WEB | UPLIFT P1 |
| (2) 1224HD14D | 035 | 3880 |
| | 046 | 6700 |
| | 057 | 6980 |
| (2) 1226HD14D | 035 | 3880 |
| | 046 | 6700 |
| | 057 | 7520 |

Horizontal Reaction, P2 = 213 lbs
 Horizontal Reaction increased to 690 lbs
 w/ (1) #10 sds installed into each return lip

- 1) Min. screw spacing & edge distance = 9/16".
- 2) Min. bearing width = 3". Min CFS thick = 0.054".
- 3) HD product specified is manufactured by Aegis Metal Framing. Any substitution is prohibited.
- 4) Welders and welding procedures shall be qualified as specified in AWS D1.3.
- 5) Min. filler metal strength, Fxx = 70 ksi.
- 6) When this connection detail is applied to both plies of a 2-ply truss, the capacities double.
- 7) This detail does not indicate or imply that the depicted bearing is structurally adequate for the loads shown. Design of bearing is required.
- 8) Max. Reactions shown are non-concurrent



www.AegisMetalFraming.com
 14515 N. Outer 40 Drive - Suite 110
 Chesterfield, MO 63017
 Phone: (866) 902-3447 Fax: (314) 434-5234

USD TRUSS TO BEARING CONNECTION 1224/1226HD14D - CFS WALL

DETAIL NO.

D-CFS-3

CATEGORY

STANDARD DETAILS

DATE

3/2012