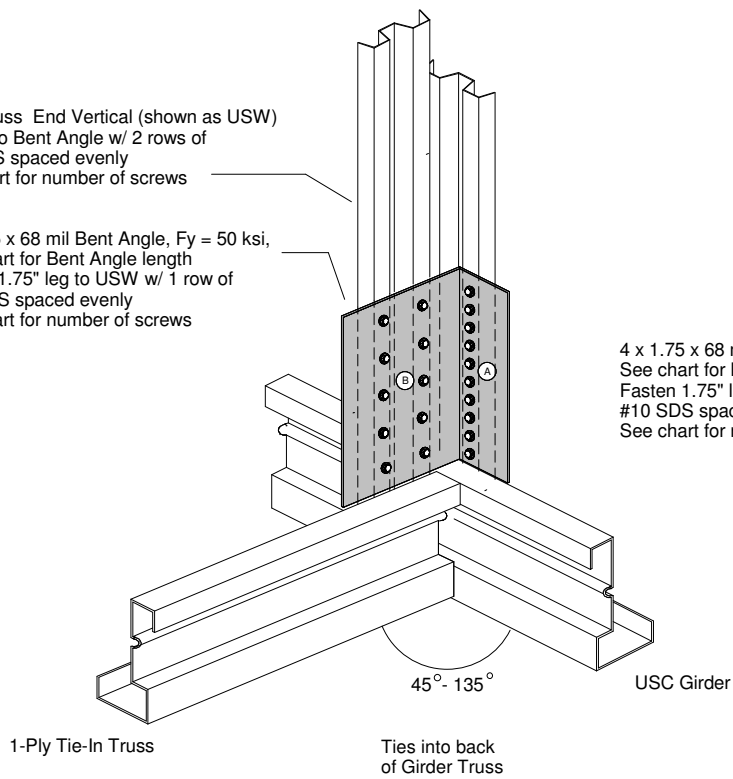
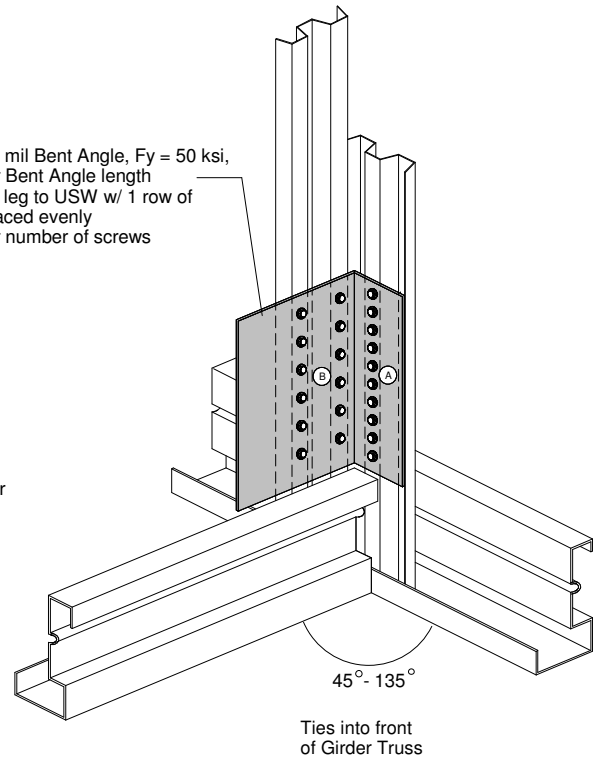


Tie-in truss End Vertical (shown as USW)
Fasten to Bent Angle w/ 2 rows of
#10 SDS spaced evenly
See chart for number of screws

5 x 1.75 x 68 mil Bent Angle, Fy = 50 ksi,
See chart for Bent Angle length
Fasten 1.75" leg to USW w/ 1 row of
#10 SDS spaced evenly
See chart for number of screws



4 x 1.75 x 68 mil Bent Angle, Fy = 50 ksi,
See chart for Bent Angle length
Fasten 1.75" leg to USW w/ 1 row of
#10 SDS spaced evenly
See chart for number of screws



Bent Angle, in	#10 screws		Max Reaction, lbs
	A	B	
6	9	18	1570
12	12	24	2915
	18	36	4375
Full web length	32	32	7775

Bent Angle, in	#10 screws		Max Reaction, lbs
	A	B	
6	9	18	2185
12	12	12	2915
	18	18	4375
Full web length	32	32	7775

Notes

1. Minimum screw spacing & edge distance = 9/16"
Maximum screw spacing = 12" O.C. Additional screws may be required to maintain 12" O.C.
2. Minimum length for full web = 24"
3. Tie-in truss may be USD

Revised 12/6/08 - changed angle to 5 x 1.75

AEGIS
METAL FRAMING a division of MITEK®
www.AEGISMETALFRAMING.COM
14515 N. Outer 40 Drive Suite 110
Chesterfield, MO 63017
Phone:866/902-3447 Fax:314/434-5234

**TRUSS-TO-TRUSS CONNECTION:
1-PLY TIE-IN TO USC GIRDER**

DETAIL NO.

US2US-26.1

CATEGORY

STANDARD DETAILS

DATE

8/21/2008