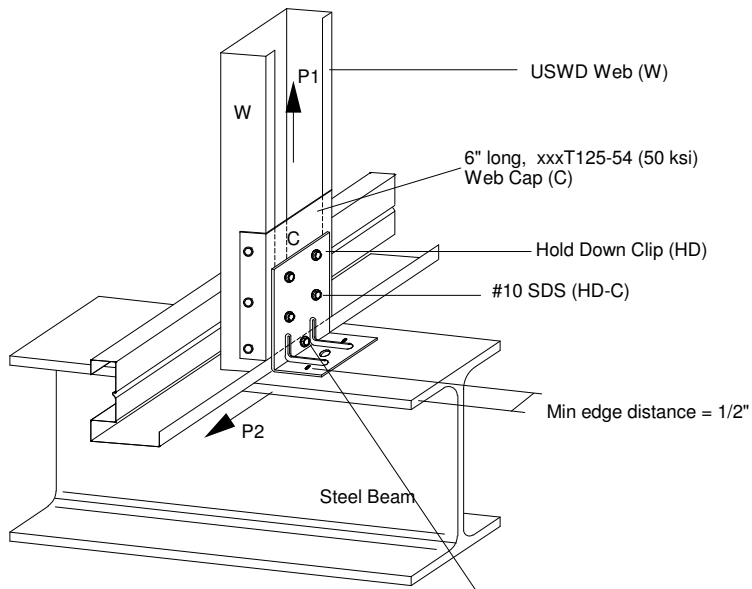


MAXIMUM CAPACITY (LBS)

	WEB (min)	#10 SDS HD-C	#10 <sup>1</sup> SDS C-W	UPLIFT (LBS) P1	
423HD16	035	2	4	650	(2) Hilti X-U or (2) #12-24 T/5
423HD14	035	2	4	990	
			3	4	1060
423HD12	035	3	6	1400	(2) Hilti X-U or (2) #12-24 T/5
	046	3	4	1400	
426HD14	035	3	6	1485	(4) Hilti X-U or (4) #12-24 T/5
		4	8	1980	
		5	8	1995	
	046	4	4	1685	
		5	6	1995	
		4	4	1980	
057	5	6	1995		
	035	4	8	1980	(4) Hilti X-U or (4) #12-24 T/5
6		12	2955		
046		6	6	2530	
046	6	8	2955		
	057	6	6	2955	

<sup>1</sup> C-W connection specified on truss drawing override this chart  
 5/8" long Hilti X-U recommended.  
 Values based on steel thickness of 1/4" - 1/2"



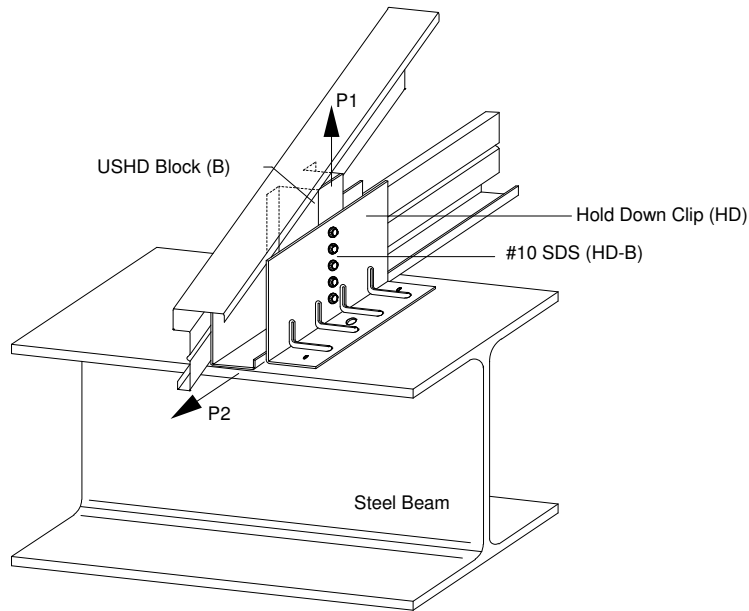
Horizontal Reaction, P2 = 155 lbs  
 Horizontal Reaction increased to 395 lbs  
 w/ (1) #10 sds installed into return lip

(1) #10 SDS into return lip  
 See Note

MAXIMUM CAPACITY (LBS)

	#10 SDS HD-B	UPLIFT P1 (LBS)	
423HD16	2	650	(2) Hilti X-U or (2) #12-24 T/5
423HD14	2	990	
		3	1060
423HD12	3	1400	(2) Hilti X-U or (2) #12-24 T/5
	3	1485	
426HD14	4	1980	(4) Hilti X-U or (4) #12-24 T/5
	5	1995	
426HD12	5	2475	(4) Hilti X-U or (4) #12-24 T/5
	6	2955	

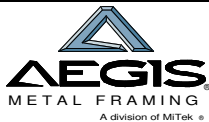
5/8" long Hilti X-U recommended.  
 Values based on steel thickness of 1/4" - 1/2"



Horizontal Reaction, P2 = 630 lbs

- 1) Min. #10 screw spacing & edge distance = 9/16".
- 2) Min. PAF spacing = 1", Min. Edge Dist = 1/2"
- 3) Min. #12-24 spacing = 5/8", Min. Edge Dist = 5/8"
- 4) Refer to the Hilti Product Technical Guide for installation requirements and application limits.
- 5) Equivalent PAF's may be substituted.
- 6) Place fasteners thru or in line w/ holes in HD14.
- 7) HD product specified is manufactured by Aegis Metal Framing. Any substitution is prohibited.
- 8) When this connection detail is applied to both plies of a 2-ply truss, the capacities double.
- 9) This detail does not indicate or imply that the depicted bearing is structurally adequate for the loads shown. Design of bearing is req'd.
- 10) Max. Reactions shown are non-concurrent.

Revised 5/6/11 - New 423HD14, 423HD16 and 426HD14  
 Revised 6/2012 - Updated screws counts and uplift values  
 Revised 4/2013 - Revised tables and added #12-24 T/5



www.AegisMetalFraming.com

14515 N. Outer 40 Drive - Suite 110  
 Chesterfield, MO 63017

Phone: (866) 902-3447 Fax: (314) 434-5234

USD TRUSS TO STRUCTURAL STEEL CONNECTION - 423HD / 426HD

DETAIL NO.

D-SS-1.2

CATEGORY

STANDARD DETAILS

DATE

4/2013