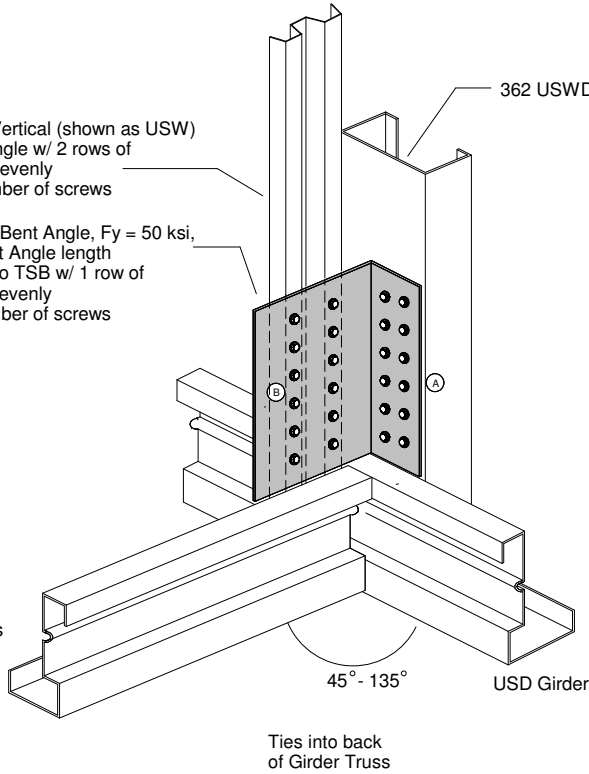


Tie in truss End Vertical (shown as USW)  
Fasten to Bent Angle w/ 2 rows of  
#10 SDS spaced evenly  
See chart for number of screws

5 x 1.75 x 14 Ga. Bent Angle, Fy = 50 ksi,  
See chart for Bent Angle length  
Fasten 1.75" leg to TSB w/ 1 row of  
#10 SDS spaced evenly  
See chart for number of screws

362 USWD 035 (Min.)

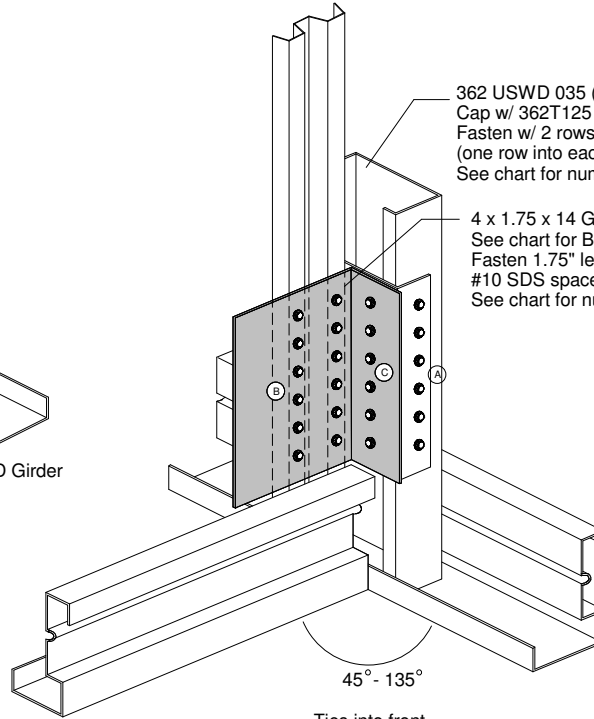
1-Ply Tie-In Truss



362 USWD 035 (Min.)  
Cap w/ 362T125 054, Full-height of angle  
Fasten w/ 2 rows of #10 SDS spaced evenly  
(one row into each flange)  
See chart for number of screws

4 x 1.75 x 14 Ga. Bent Angle, Fy = 50 ksi,  
See chart for Bent Angle length  
Fasten 1.75" leg to TSB w/ 1 row of  
#10 SDS spaced evenly  
See chart for number of screws

Ties into front  
of Girder Truss



Angle	Bent Angle, in	#10 screws		Max Reaction, lbs
		A	B	
90	6	12	12	2915
	12	20	20	4860
		24	24	5830
	Full web length	32	32	7775
45-135	6	6	18	1395
	12	12	24	2350
		16	32	3530
		Full web length	32	32

Angle	Bent Angle, in	#10 screws			Max Reaction, lbs
		A	B	C	
90	6	6	12	6	2915
	12	10	20	10	4860
		12	24	12	5830
	Full web length	16	32	16	7775
45-135	6	4	18	4	1725
	12	10	20	10	4860
		12	24	12	5830
		Full web length	16	32	16

Notes

1. Minimum screw spacing & edge distance = 9/16"  
Maximum screw spacing = 12" O.C. Additional screws may be required to maintain 12" O.C.
2. Minimum length for full web = 24"
3. Tie-in truss may be USD

Revised 12/6/08 - changed angle to 5 x 1.75

DETAIL NO.

**US2US-27.1**

CATEGORY

**STANDARD DETAILS**

DATE

8/21/08



METAL FRAMING a division of MITEK®

www.AEGISMETALFRAMING.COM

14515 N. Outer 40 Drive Suite 110

Chesterfield, MO 63017

Phone:866/902-3447 Fax:314/434-5234

**TRUSS-TO-TRUSS CONNECTION:  
1-PLY TIE-IN TO USD GIRDER**